

Register online at  
[www.ccesc.org](http://www.ccesc.org)  
 Click on the Training tab

*Course Selection*

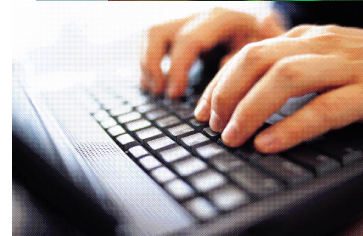
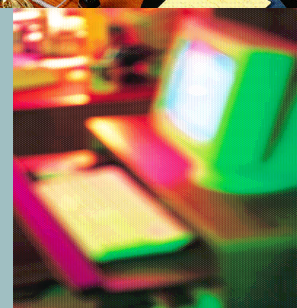
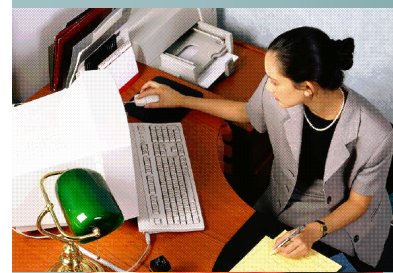
Circle credit options for each course	CEU Credit	Grad. Cred-
Best Practices for Technology Integration	50.00	240.00
Math Across the Curriculum	50.00	240.00
Problem-Based Learning	50.00	240.00
Integrating Videoconferencing	50.00	240.00
Teaching with Smart "Interactive" Boards	50.00	240.00
Teaching Geometry	50.00	240.00
Connecting Real World Issues to Curriculum	50.00	240.00
Teaching with Geometer's Sketchpad	100.00	480.00
Classroom Interventions	50.00	240.00
Differentiation In Instruction	50.00	240.00
Writing Across The Curriculum	50.00	240.00
Content Area Literacy	50.00	240.00
Teaching Students with Autism	50.00	240.00
Master Teacher	150.00	480.00
Teaching with TI-Nspire Calculators	50.00	240.00
Teaching Algebra with TI-Nspire	50.00	240.00
Teaching Geometry with TI-Nspire	50.00	240.00

Register Online  
 Cathy Macdonald  
 2400 Clermont Center Drive, Suite 100,  
 Batavia, OH 45103  
 Phone (513) 735-8300 FAX: (513) 735-8370  
 email: [macdonald\\_c@ccesc.org](mailto:macdonald_c@ccesc.org)



Southern Ohio Educational Service Center  
 In partnership with Ohio ESC's eLearning Collaborative

On-Line Professional Development Courses  
 Winter 2012



- ❖ Convenient
- ❖ No Schedule
- ❖ No Parking
- ❖ No Driving
- ❖ Standards-Based Instruction



---

## Program Information

Clermont County Educational Service Center is offering seventeen online Professional Development Workshop Courses. Each course will take approximately fifteen hours to complete.

Winter Term runs January 20—March 23, 2012.

### Recommended Equipment

- 
- ❖ Computer (Windows or Mac) with a compatible java browser, email and internet access. Participants will work on courses independently.

---

## Course Descriptions

---

- ❖ **Content Area Literacy**-learn strategies to improve students' reading skills for all subjects. (1sem. hour)
- ❖ **Math Across the Curriculum** course reviews six math standards that were moved from high school to middle school. (1 sem. hour)
- ❖ **Problem-Based Learning** teaches the basic concepts of problem based learning, takes you through a problem-based scenario and then provides guidelines and templates for planning and evaluating a problem-based unit. (1 sem. hour)
- ❖ **Integrating Videoconferencing into the Curriculum** focuses on planning and evaluating videoconferences. Teachers should have access to videoconference equipment because the course requires the teacher to conduct a videoconference. ( 1 sem. hour)
- ❖ **Teaching Geometry** reviews six of Ohio's Geometry Standards (Patterns, Nets, Slope, Isometrics, 3-D figures and Ratios). (1 sem. hour)
- ❖ **Connecting Real World Issues to the Curriculum** This course prepares teachers to integrate the United Nations' issue of sustainable development in the curriculum and to use problem-based teaching methodology to design lessons that focus on critical thinking. (1sem. hour)
- ❖ **Teaching with Geometer's Sketchpad** This course provides a tutorial for Geometer's Sketchpad and how to integrate the software into the mathematics curriculum. (2 sem. hours)

---

## Course Descriptions

---

- ❖ **Classroom Interventions** course uses a problem solving methods to identify behavioral and academic classroom interventions. (1 sem. hour)
- ❖ **Differentiating Instruction** Each teacher-friendly lesson investigates an aspect of differentiation. (1 hours)
- ❖ **Writing Across the Curriculum** helps all teachers to infuse writing into all content areas (1 sem. hour)
- ❖ **Teaching with Smart "Interactive" Boards** provides basic and advanced techniques for teaching with Smart boards. (1 sem. hour)
- ❖ **Best Practices for Technology Integration** focus on five concepts for integrating technology into the classroom. (1 sem. Hour)
- ❖ **Teaching Students with Autism** This course provides information and teaching strategies for working with students with Autism. (1 sem. hour)
- ❖ **Master Teacher** This course prepares teachers to apply or Ohio's Master Teacher Certification. All Ohio teachers with 7 years of experience are eligible to apply for Master Teacher certification. (2 sem. hrs)
- ❖ **Teaching with TI-Nspire Calculators** Teachers will learn how to use and how to implement TI-Nspire calculators. Participants need a TI-Nspire and the free Teacher's companion software for this course. (1 sem. Hour)
- ❖ **Teaching Algebra with the TI-Nspire**( 1 Sem. Hour) Learn how to design Algebra lessons for the TI-Nspire while you explore resources and share best teaching practices. This course was developed in partnership with Texas Instruments and requires the TI-Nspire calculator.
- ❖ **Teaching Geometry with the TI-Nspire**(1 Sem. Hour) Learn how to design Geometry lessons for the TI-Nspire while you explore resources and share best teaching practices. This course was developed in partnership with Texas Instruments and requires the TI-Nspire calculator.

Ashland University will apply six graduate credits from these courses towards a masters. These courses provide graduate credit to meet the Highly Qualified Teacher requirements.